

Template excel files for each miscellaneous summary table are available on the FLH website at:
<http://flh.fhwa.dot.gov/resources/design/plans/cfl/template/fp14/>

CURB AND SIDEWALK SUMMARY											
Item number	No Pay	No Pay	No Pay	60110-0000	60901-1200	60901-1700	60902-1000	61501-0100	61504-1000	Remarks	Schedule
Station to station	REMOVAL OF CURB AND GUTTER, CONCRETE	REMOVAL OF CURB, ASPHALT	REMOVAL OF SIDEWALK, CONCRETE	CONCRETE COLORING AGENT	CURB, CONCRETE, 14-INCH DEPTH	CURB, CONCRETE, 18-INCH DEPTH	CURB AND GUTTER, CONCRETE, 12-INCH DEPTH	SIDEWALK, CONCRETE	ACCESSIBILITY RAMP, CONCRETE		
	LNFT	LNFT	SQYD	LB	LNFT	LNFT	LNFT	SQYD	SQYD		
17+25 to 21+00 Lt	464		214	1,032			398	206	9	Visitor Center SE	A
18+07 to 21+38 Lt	438		329	1,381			445	303	16	Visitor Center NW	A
21+00 to 21+45 Lt	65			122							A
22+19 to 30+87 Lt		845		551	845						A
33+80 to 36+40 Lt	245			308						Medora Overlook	A
34+56 to 35+59 Lt	190			222			215			Medora Overlook	A
34+59 to 35+49 Lt				194				52	15	Medora Overlook	A
37+50 to 42+46 Rt		495		441		495					A
49+18 to 50+09 Lt		91		59	91						A
50+05 to 54+12 Rt		401		261	401						A
55+00 to 62+48 Lt		741		483	741						A
62+95 to 64+80 Rt		184		120	184						A
64+91 to 68+66 Rt		350		312		350					A
73+87 to 76+21 Rt		225		147	225						A
78+40 to 91+60 Lt		1,095		854	1,310						A
91+60 to 92+60 Lt		100									A
92+32 to 94+60 Rt		225		147	225						A
101+99 to 108+85 Lt		686		447	686						A
131+53 to 134+70 Lt		311		203	311						A
134+69 to 142+40 Rt		310		672		754					A
156+10 to 161+70 Rt		532		474		532					A
156+35 to 160+67 Lt		457		407		457					A
162+75 to 167+05 Rt		448		399		448					A
164+55 to 167+88 Lt		313		279		313					A
	620			491	753						A
	184			267	300						A
				297			100	52	15	Johnson Plateau	A
	401			505			190	92	15	Beef Corral Bottom	A
	9,014	543		11,078	5,772	3,649	1,764	705	70		

Refer to the CADD Manual Chapter 3 located on the FLH website for more information on the file naming conventions:
http://flh.fhwa.dot.gov/resources/cadd/cfl/CaddManDocs/MicrostationV8iStandardsManual/Chapter3_NamingConventions_v8i.pdf

Use bold text for summary totals in individuals tables.

Use bold text and all capital letters for titles of individual tables.

Show bid schedules, stationing, location (left,right), item number, description, pay unit, quantity, and remarks as appropriate.

SURVEY AND STAKING SUMMARY			
Item number	15216-2000	15215-7000	Schedule
Station to Station	SURVEY AND STAKING, GRADE FINISHING STAKES	SURVEY AND STAKING, PARKING AREA	
	MPLE	LPSM	
10+80 to 198+00	3.55		A
Employee Parking		1	A
Visitor Center		1	A
Medora Overlook		1	A
Johnson Plateau		1	A
Beef Corral Bottom		1	A
SCHEDULE A TOTALS	3.55	5	

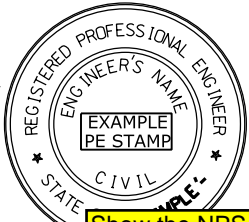
SUBEXCAVATION SUMMARY						
ITEM NUMBER			NO PAY		20402-0000	Schedule
Station to Station	Length	Width	GEOTEXTILE, CLASS 1, TYPE E, WOVEN		SUBEXCAVATION	
	LNFT	LNFT	SQYD	CUYD		
29+50 to 34+40	490	23	1,252	835		A
36+25 to 40+20	395	23	1,009	673		A
88+50 to 90+75	225	23	575	383		A
137+85 to 144+85	700	23	1,789	1,193		A
166+00 to 169+00	300	26	850	567		A
189+20 to 195+00	580	22	1,418	945		A
SCHEDULE A TOTALS			6,893	4,596		

ROADWAY OBLITERATION, SUMMARY			
Item Number	21101-1000	Schedule	
Station to Station	ROADWAY OBLITERATION, METHOD 1		
	SQYD		
134+70 to 141+84	Lt 282	A	
	282		

Title of the sheet is 'Miscellaneous Summaries'.

Show Sheet X of Y for quantity summary sheets when necessary.

Refer to the CFL policy on Sealing and Signing of A/E Documents located on the CFL Website at:
<http://flh.fhwa.dot.gov/resources/pm/cfl/documents/policies/sealing-signing-policy.pdf>



Show the NPS PMIS and drawing numbers for all NPS projects

U.S. DEPARTMENT OF TRANSPORTATION
FEDERAL HIGHWAY ADMINISTRATION
CENTRAL FEDERAL LANDS HIGHWAY DIVISION

MISCELLANEOUS SUMMARIES

Sheet 1 of 3